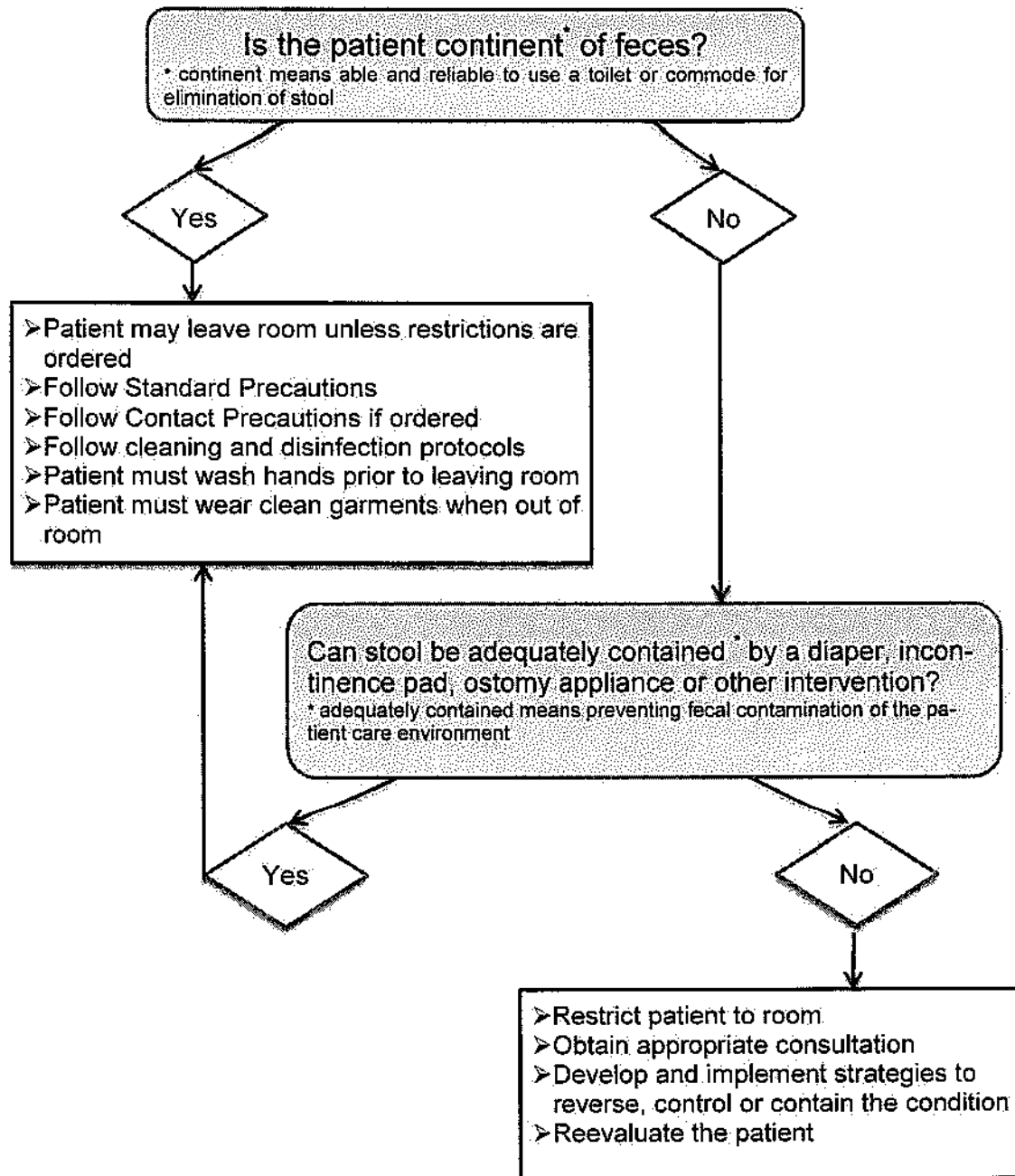


## Condition: Fecal Incontinence

Target organisms: VRE, C. difficile, Norovirus and other enteric viruses, ESBL, CRE/CPE

Interventions: Diapers, incontinence pads, ostomy appliances. Antidiarrheal drugs (not recommended for C. difficile and some other infectious conditions)

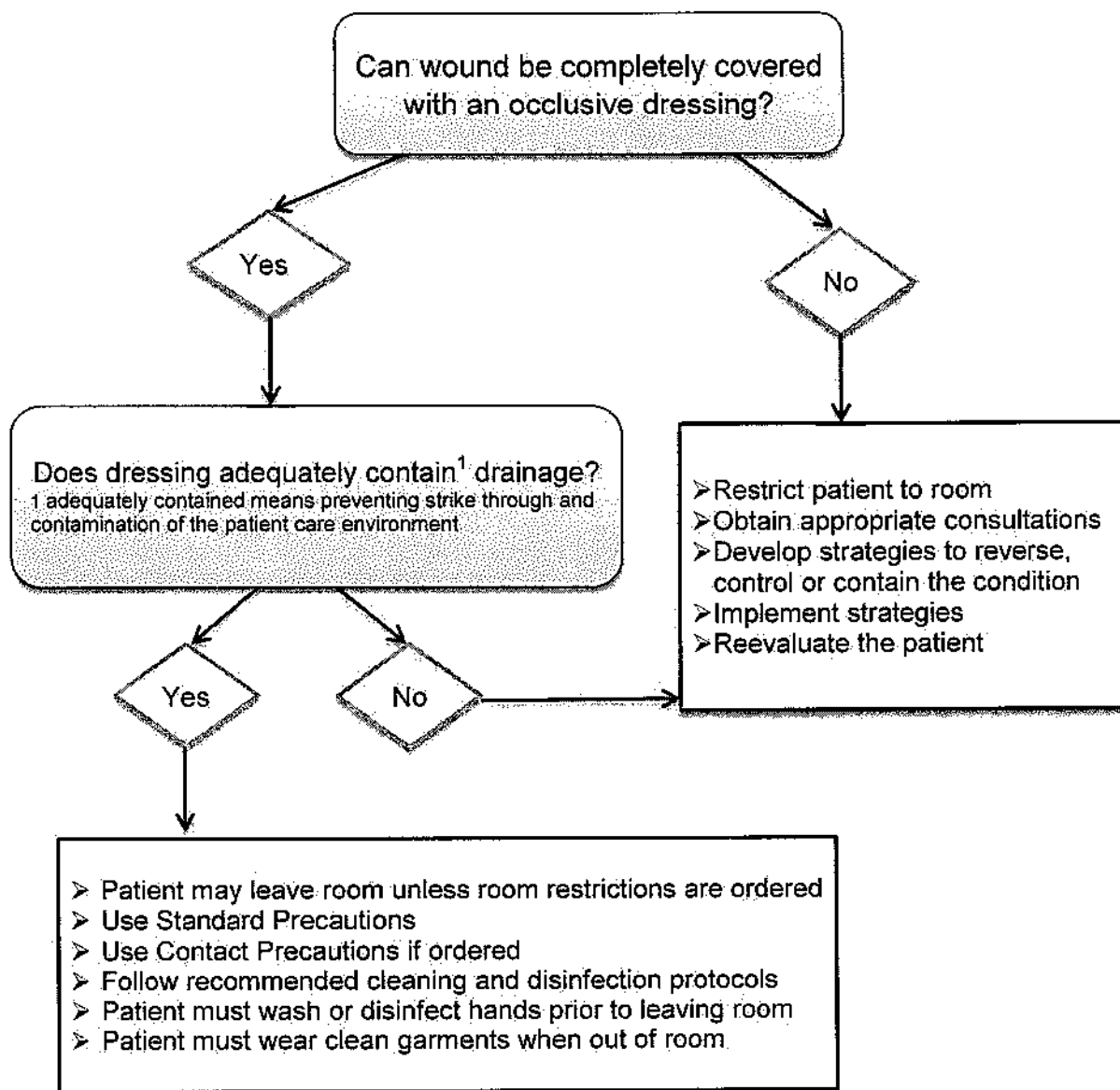


### Condition: Draining wound

Potentially infectious material: wound drainage, blood, serum

Target organisms: MRSA, ESBL CRE/CPE, Herpes simplex virus, Varicella zoster virus, HIV, Hepatitis B virus, Hepatitis C virus

Interventions: Absorbent/Occlusive wound dressing.



**Condition: Coughing, sneezing, rhinorrhea, uncontrolled salivation**

Potentially infectious materials: Sputum, nasal drainage, saliva, respiratory secretions  
Target organisms: MRSA, ESBL, CRE/CPE, Respiratory viruses, Herpes simplex virus

